



The Aesthetics of the Line

Line Drainage – for Unique Locations



The Aesthetics of the Line

Line Drainage – for Unique Locations



The Aesthetics of the Line

ACO DRAIN® surfaces are as diverse as the architectural demands.

Function and aesthetics always create a unique relationship. Be it ductile iron, galvanized steel, stainless steel, plastic or polymer concrete: Our surfaces always suit the situation – or even add aesthetic value. Slotted frames work as a design element in the architectural design; light trails lead the eye into the distance and provide orientation. Individually designed grating systems open the space for inspiration.

We invite you to join us on a journey to very special places – thanks also to the creative drainage solutions.

Contents

■ Line Drainage with Gratings	6
■ Line Drainage with Slot Channels	44
■ Line Drainage with Lighting	66
■ Monolithic Line Drainage	84
■ Product & Service	94



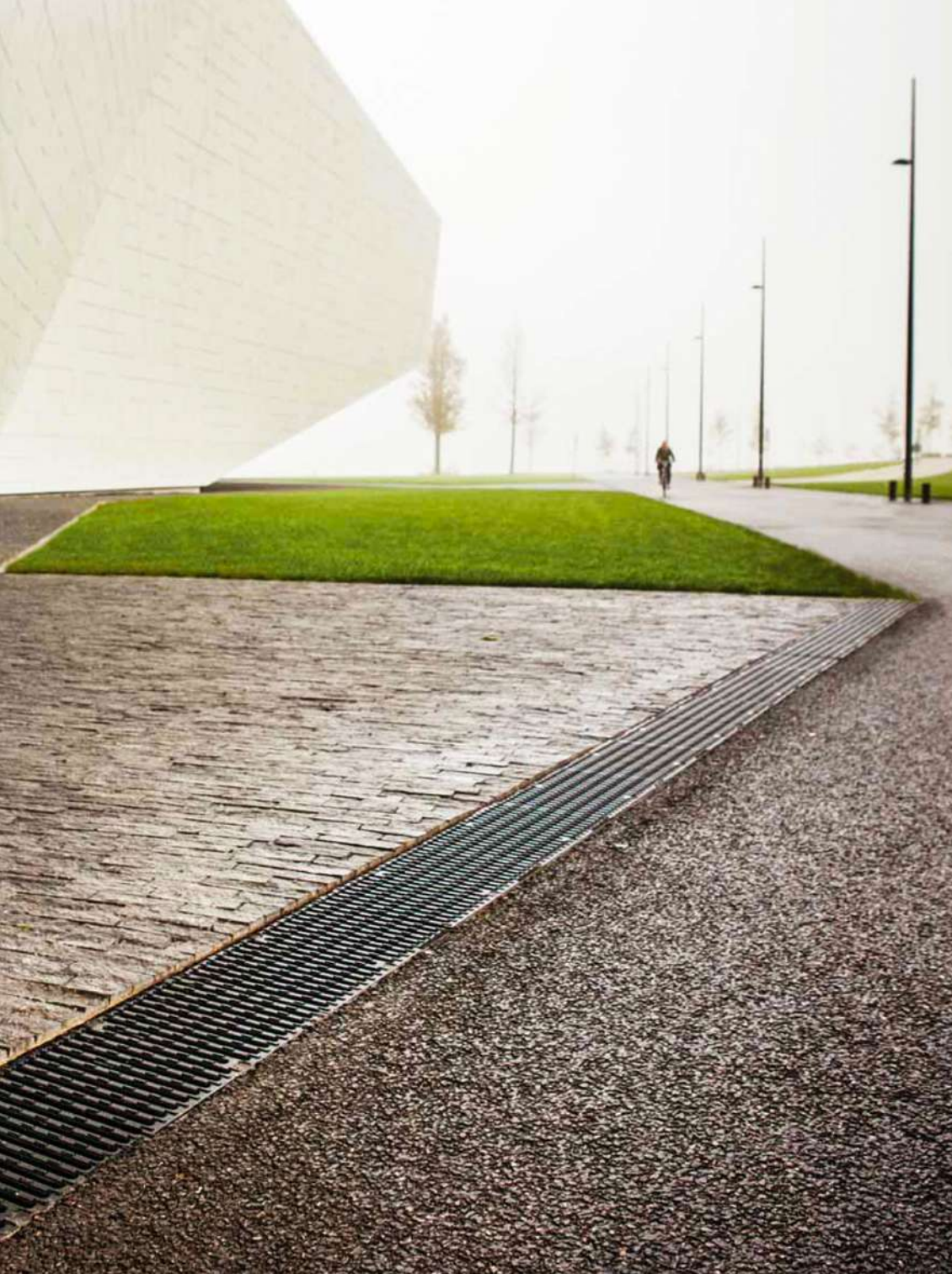


Line Drainage with Grating

EYE FILMMUSEUM
Amsterdam, Netherlands

■ CAST IRON SLOTTED GRATING | Multiline





“True art is selfish.”

Ludwig van Beethoven



PALEISBRUG

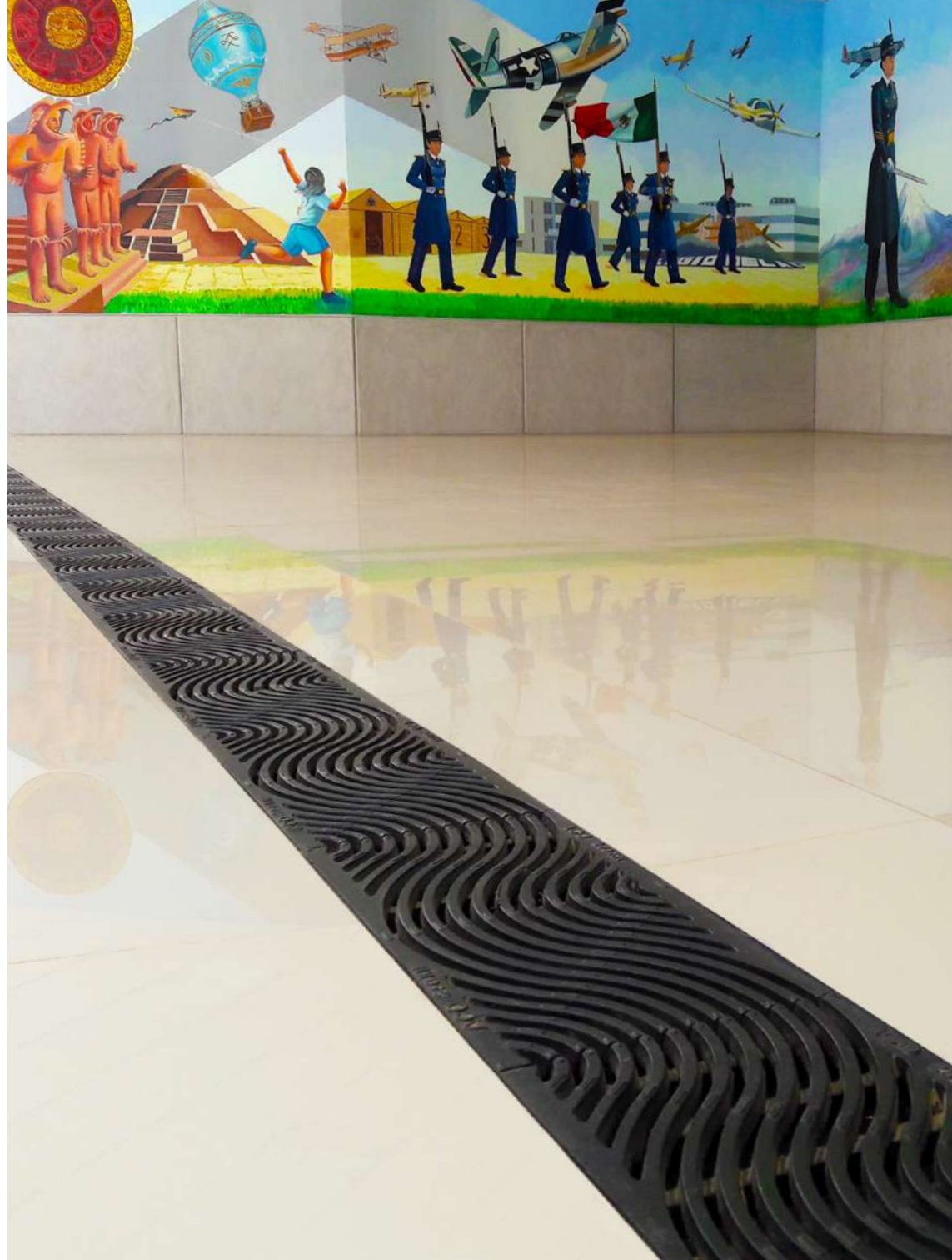
's-Hertogenbosch, Netherlands

■ CAST IRON SLOTTED GRATING | Multiline



COLEGIO DEL AIRE
Zapopan, Mexico

■ CAST IRON GRATING FREESTYLE | Multiline





PEDESTRIAN ZONE "FELDSCHMIEDE"
Itzehoe, Germany

■ CAST IRON GRATING FREESTYLE | Multiline

*“The extraordinary
does not happen in a straight,
ordinary way.”*

Johann Wolfgang von Goethe



ERGO INSURANCE GROUP
Hamburg, Germany

■ FACADE DRAINAGE | Profiline





EKKERSRIJT FURNITURE MALL
Son en Breugel, Netherlands

■ CAST IRON GRATING FREESTYLE | Multiline



TOOSBY TORV (ECCO)

Bredebro, Denmark

■ CAST IRON GRATING FREESTYLE | Multiline





DE BLOB
Eindhoven, Netherlands

■ SLOTTED GRATING | Multiline

*“The noblest
of the elements
is water.”*

Pindar





*LE JARDIN D'ACCLIMATATION
Louis Vuitton Foundation - Paris, France*

■ RADIUS CHANNEL

*ADIDAS HEADQUARTER
Herzogenaurach, Germany*

■ FACADE DRAINAGE | Profiline





*DC TOWER 1
Vienna, Austria*

■ FACADE DRAINAGE | Profiline



COLUMBIA HOTEL
Wilhelmshaven, Germany
■ FACADE DRAINAGE | Profiline

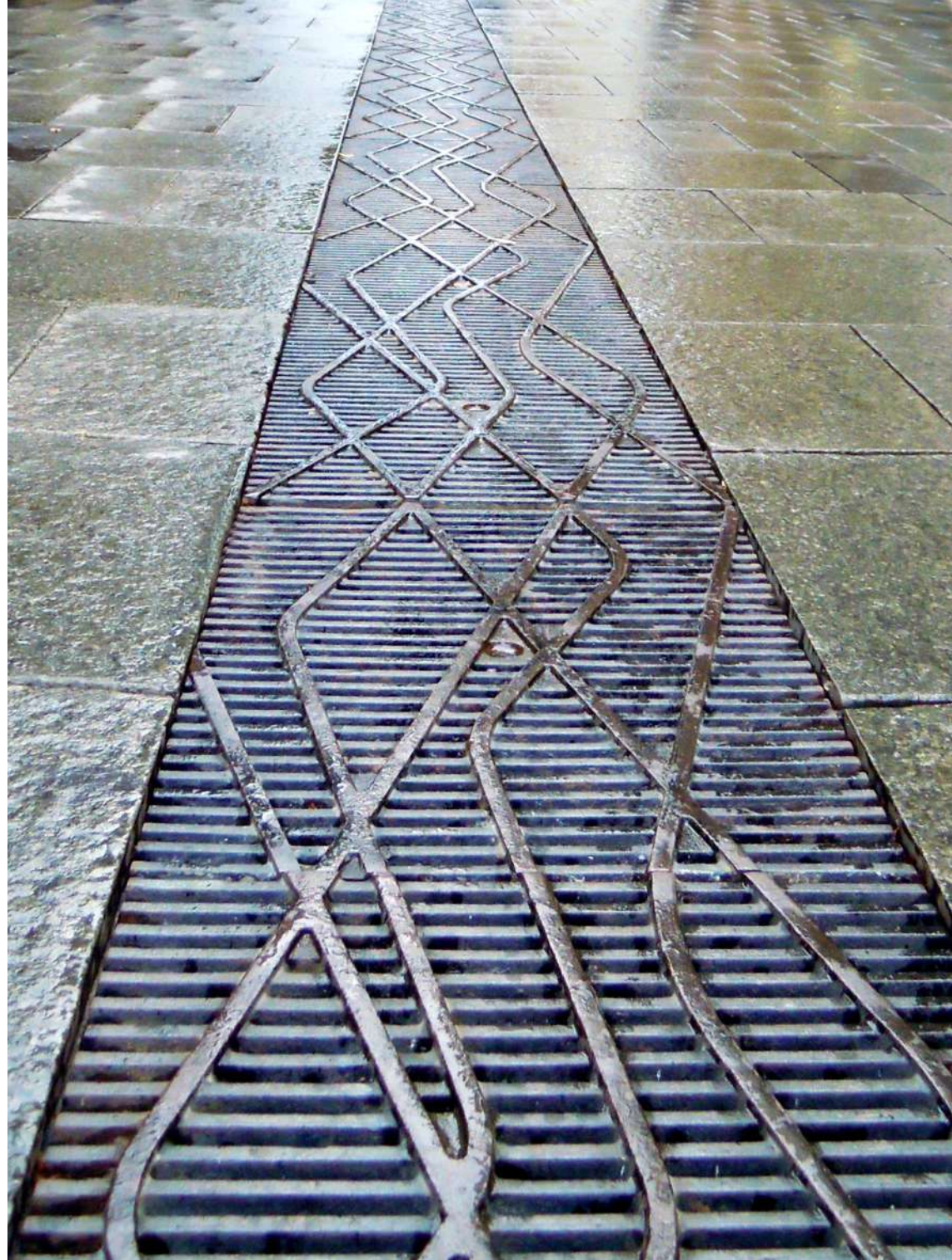


*“It takes many strings
tuned differently
to create harmony.”*

Joseph Karl Benedikt Freiherr von Eichendorff

*PITT STREET
Sydney, Australia*

■ FREESTYLE | Multiline



*LUNAR PARK
Sydney, Australia*

■ LONGITUDINAL BAR GRATING | Multiline







*NATIONAL MARITIME MUSEUM
London, United Kingdom*

■ SLOTTED GRATING | Multiline



*“A path is made
by walking on it.”*

Dschuang Dsi





KÄTE AHLMANN HAUS
Büdelsdorf, Germany

■ LONGITUDINAL PROFILE GRATING | Multiline

BATHING BEACH
Müritz, Germany

■ SLOTTED GRATING | Multiline



EXPERIENCE PROMENADE
Laboe, Germany

■ CAST IRON GRATING FREESTYLE | Multiline



MARKET SQUARE
Geilo, Norway

■ CAST IRON GRATING FREESTYLE | Multiline





*KVÆSTHUSMOLEN
Copenhagen, Denmark*

■ CORTEN SLOTTED GRATING | Multilne

*GLOBETROTTER STORE
Hamburg, Germany*

■ FACADE DRAINAGE | Profiline



RONDO SHOPPING MALL
Büdelsdorf, Germany

■ COMPOSITE GRATING | Multiline





*OLD HARBOR
Wismar, Germany*

■ SLOTTED GRATING | Multiline



MARINA KORNATI
Zadar, Croatia

■ SLOTTED GRATING | Mütilne

*AIRPORT FIRE SERVICE
Leipzig, Germany*

■ SLOTTED GRATING | PowerDrain





*“Power does not
make noise,
it is there and acts.”*

Albert Schweitzer

*EXHIBITION CENTER
Hannover, Germany*

■ SLOTTED GRATING | PowerDrain



*CENTRAL RAILWAY STATION
Vienna, Austria*

■ SLOTTED GRATING | Multiline



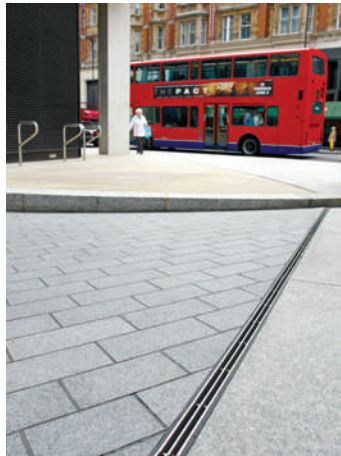


besuchsterrassen hünkelberg

*BERGPARK WILHEMSHÖHE
Kassel, Germany*

■ SLOTTED GRATING | PowerDrain





Line Drainage with Slot Channel

FRIES MUSEUM
Leeuwarden, Netherlands

■ SLOT CHANNEL | Multiline





*COMMUNITY CENTRE
Drimmelen, Netherlands*

■ SLOT CHANNEL | Multiline



GARE DES GUILLEMINS
Liège, Belgium

■ SLOT CHANNEL | Multiline





GARE DES GUILLEMINS
Liège, Belgium

■ SLOT CHANNEL | Multiline



*“Even detours
expand our horizons.”*

Ernst Ferstl

ALMERE POORT
Almere, Netherlands
■ SLOT CHANNEL | Multiline



HOTEL D-RESORT ŠIBENIK
Mandalina, Croatia

■ SLOT CHANNEL | Multiline

*MUNICIPAL OFFICES
Jaarbeursplein, Netherlands*

■ SLOT CHANNEL | Multiline





*PARK WIJHEZICHT
Wijhe, Netherlands*

■ SIDELINE with LED lighting | Multiline



RIPPERDA BARRACKS
Haarlem, Netherlands

■ SLOT CHANNEL | Multiline



VILLE DE VILLEFRANCHE DE ROUERGUE
Aveyron, France

■ SLOT CHANNEL | Multiline



PARLAIS LIECHTENSTEIN
Vienna, Austria

■ SLOT CHANNEL | Multiline

*“History does not
end with us.”*

Sokrates





RIJKOOMPJE
Veenendaal, Netherlands

■ SLOT CHANNEL | Multiline



CUTTY SARK GARDENS
London, United Kingdom

■ SLOT CHANNEL | Multiline

CITY CENTRE
Plovdiv, Bulgaria

■ SLOT CHANNEL | Multiline





LUKA GAZENICA
Zadar, Croatia

■ Q-GUARD | Qmax



NATIONAL GALLERY
Leipzig, Germany

■ SLOT CHANNEL | Multiline

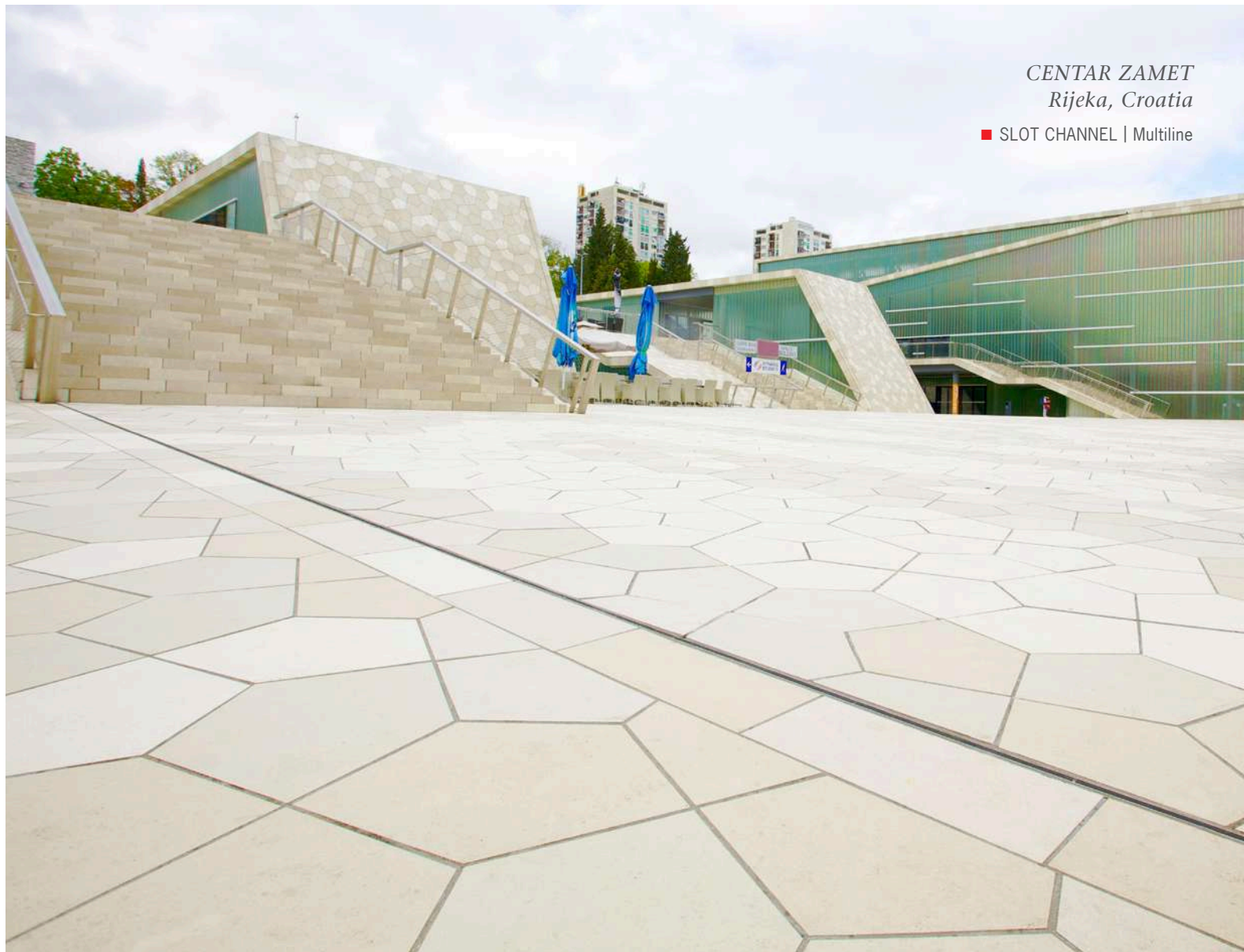
*SERVISNI CENTAR
Trogir, Croatia*

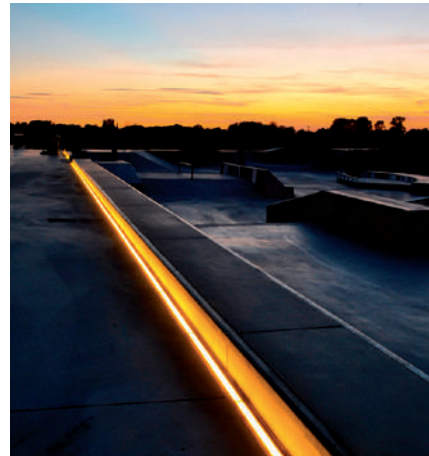
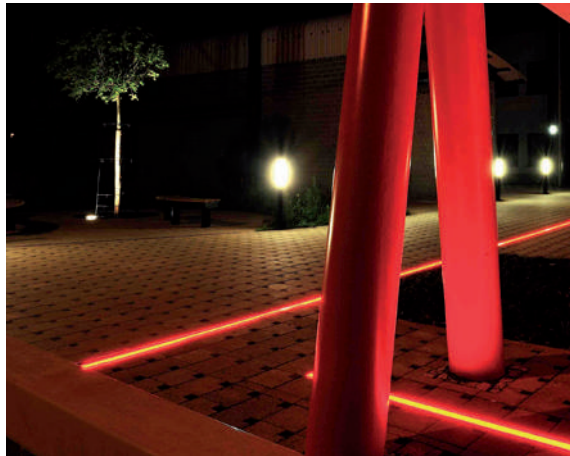
■ SLOT CHANNEL | Multiline



CENTAR ZAMET
Rijeka, Croatia

■ SLOT CHANNEL | Multiline







Line Drainage with Lighting

*“Light is a symbol
of life and joy.”*

Honoré de Balzac





SCULPTURE PARK NORDART
Büdelsdorf, Germany

■ SIDELINE with LED lighting | Multiline



STADTHAUPTMANNSHOF
Mölln, Germany

■ SLOTTED GRATING with Lightpoint | Multiline



*OBEREIDERHAFEN
Rendsburg, Germany*

■ SLOTTED GRATING with Lightpoint | Multiline



*THE GARDEN OFFICES
Amstelveen, Netherlands*

■ SIDELINE with LED lighting | Multiline



*BUS STATION
Herne, Germany*

■ SIDELINE with LED lighting | Multiline





*SKATEPARK
Zwevezele, Belgium*

■ SIDELINE with LED lighting | Multiline



PEDESTRIAN ZONE "FRIEDRICHSTRASSE"
Heide, Germany

■ CAST IRON GRATING FREESTYLE with Eyeleds | Multiline



*LE PLACE DE LA FONTAINE CHAUDE
Dax, France*

■ SIDELINE with LED lighting | Multiline

INLAND HARBOUR QUAY
Kiel, Germany

■ SLOTTED GRATING with Lightpoint | Multiline





ZECHE ZOLLVEREIN
Essen, Germany

■ COMPOSITE GRATING with Eyeleds | Multiline

*“Light absorbs darkness,
creating a safe haven.”*

Pavel Kosorin

ACO ACADEMY
Stadtlengsfeld, Germany

■ SIDELINE with LED lighting | Multiline





ACO THORMANNHALLE
Büdelsdorf, Germany

■ SIDELINE with LED lighting | Multiline

RVT SINT-JOZEF
Ertvelde, Belgium

■ SIDELINE with LED lighting | Multiline





*STATE HORTICULTURAL SHOW
Schleswig, Germany*

■ SLOTTED GRATING with Lightpoint | Multiline



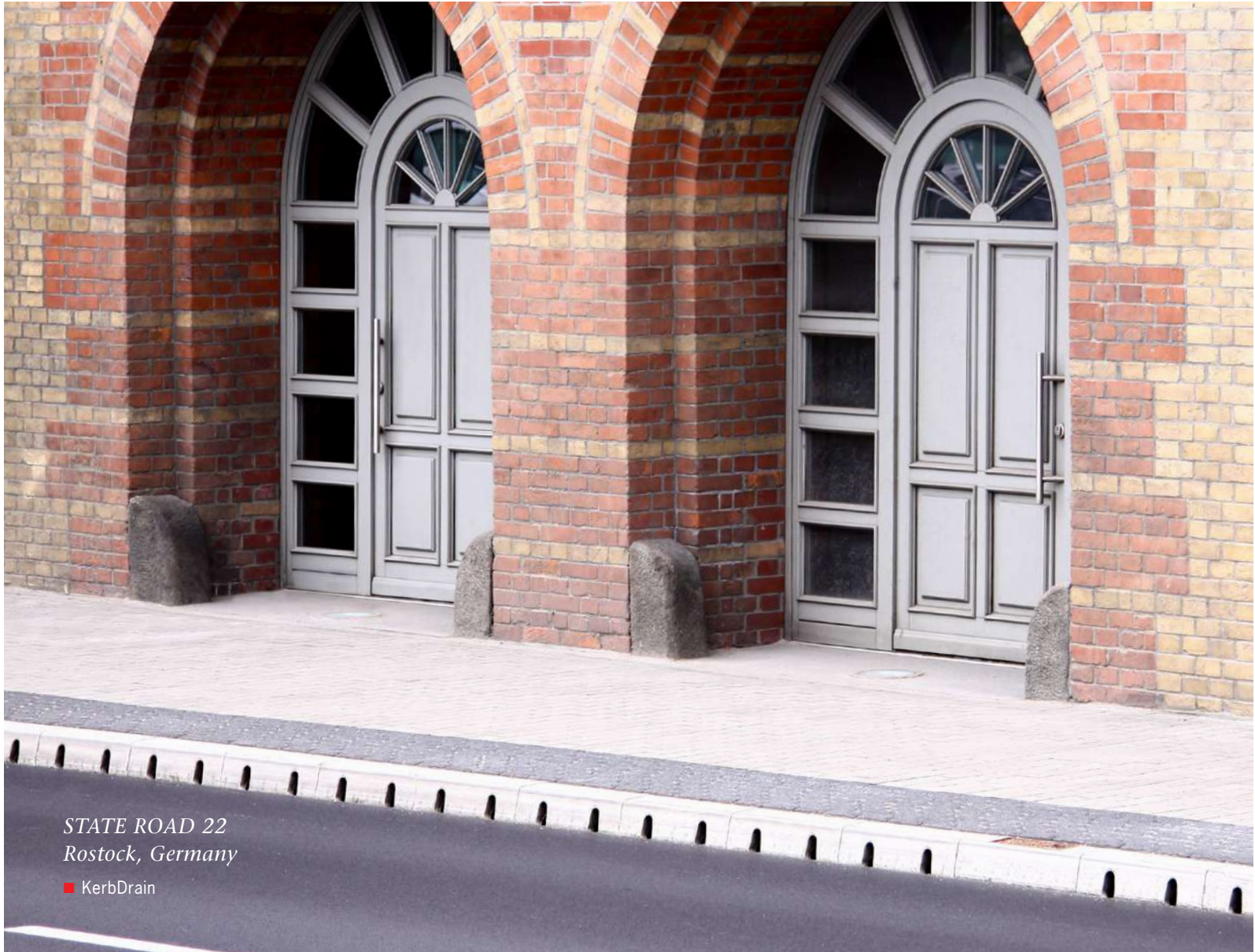


Monolithic Line Drainage

*UNIVERSITY OF APPLIED SCIENCES
FOR ENGINEERING AND ECONOMIC
Berlin, Germany*

■ KerbDrain





*STATE ROAD 22
Rostock, Germany*

■ KerbDrain

*KIELER YACHT-CLUB
Kiel, Germany*

■ KerbDrain





*YACHT MARINA
Kiel, Germany*

■ KerbDrain



CIRCUIT DE CATALUNYA
Barcelona, Spain

■ MONOBLOCK



AIR BASE
Ingolstadt-Manching, Germany

■ MONOBLOCK

VIRACOPOS AIRPORT
Campinas, Brazil

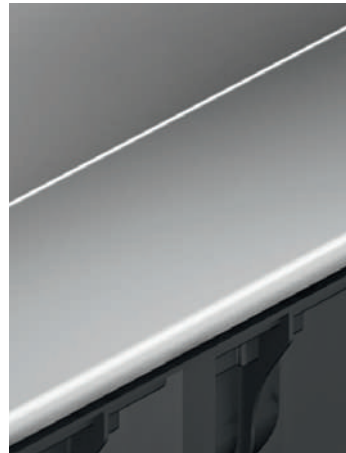
■ MONOBLOCK

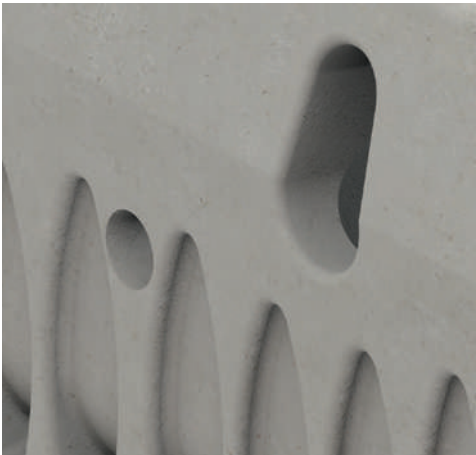




SERVISNI CENTAR
Trogir, Croatia

■ MONOBLOCK





Product & Service

- Gratings and Covers 96
- Line Drainage 100
- Service 104

ACO DRAIN® Gratings and Covers

Drainlock Gratings and Covers for ACO Multiline and XtraDrain

Slotted grating
Galvanized steel
Stainless steel

Slotted grating
Ductile iron

Slotted grating
Heelguard
Ductile iron

Composite grating
silver grey
Plastic

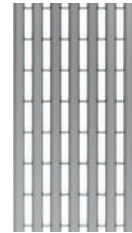
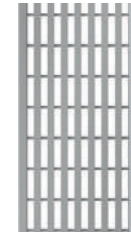
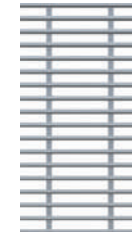
Composite
grating
Microgrip
Plastic

Cross bar grating
Stainless steel

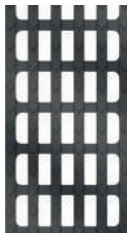
Longitudinal
bar grating
Galvanized steel
Stainless steel

Heelsafe
bar grating
Stainless steel

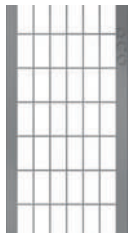
Longitudinal
profile grating
Galvanized steel
Stainless steel



Longitudinal
bar grating
in mesh design
Ductile iron



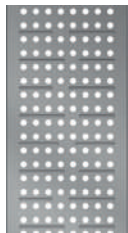
Mesh grating
Galvanized steel
Stainless steel



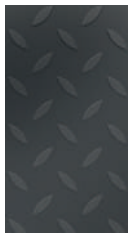
Mesh grating Q+
Galvanized steel
Stainless steel



Perforated grating
Galvanized steel
Stainless steel



Solid cover
Ductile iron



Slot channel
Galvanized steel
Stainless steel



LightPoint
Ductile iron



Lighting

Eyeleds
Plastic



LED lighting

Sideline
Galvanized steel



Freestyle
Design flag
Ductile iron



LED lighting



ACO DRAIN® Gratings and Covers

Gratings for ACO PowerDrain and SK

Slot grating
Ductile iron



Rails for ACO Qmax

Q-Flow
Ductile iron



Q-Flow
Galvanized steel



Q-Guard
Ductile iron



Q-Guard
Galvanized steel



Q-Road
Ductile iron

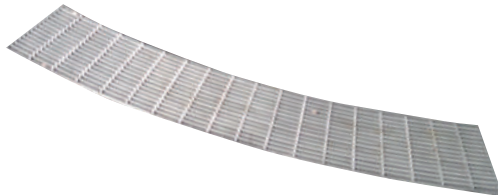


Q-Slot
Galvanized steel



Special Solutions

Radius channels
Stainless steel



Monolithic

Monoblock RD
Polymer concrete



Monoblock PD
Polymer concrete

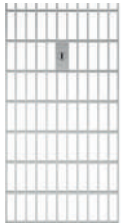


KerbDrain
Polymer concrete



Facade Gratings

Mesh grating
Galvanized steel
Stainless steel



Slot grating
Galvanized steel
Stainless steel



Perforated grating
Galvanized steel
Stainless steel



Heelsafe (rough grating)
Stainless steel



Heelguard (fine grating)
Stainless steel



Cross bar grating
Galvanized steel
Stainless steel



Longitudinal slot grating
Stainless steel



Longitudinal bar grating
Galvanized steel
Stainless steel



Heelsafe grating
Stainless steel



Longitudinal profile grating
Galvanized steel
Stainless steel



Composite grating
Plastic



ACO DRAIN® Line Drainage

ACO Multiline Drainage Channel



Seal
in
TECHNOLOGY

ACO Multiline Seal in: New channel with integrated seal as standard.

Load classes

- A 15
 - B 125
 - C 250
 - D 400
 - E 600
- in accordance with EN 1433

Nominal widths

100, 150, 200, 300, 400, 500

Material

Polymer concrete channel with steel, stainless steel or ductile iron edge

Areas of application

- Railway plat forms
- Façade drainage
- Pedestrian areas, paths/ bicycle paths
- Light channels
- Public paths and places
- Parking decks, car parks
- Ramps/under ground car park entrances

ACO XtraDrain Drainage Channel



Load classes

- A 15
 - B 125
 - C 250
- in accordance with EN 1433

Nominal widths

100, 150, 200

Material

Plastic (PP) with plastic edge, galvanized steel edge

Areas of application

- Façade drainage
- Pedestrian areas, paths/ bicycle paths
- Car parks
- Design and light

ACO PowerDrain and SK Heavy Duty Channel



Load classes

- A 15
 - B 125
 - C 250
 - D 400
 - E 600
 - F 900
- in accordance with EN 1433

Nominal widths

PowerDrain: 75/100, 125/150,
175/200, 275/300
SK: 100, 150, 200, 300

Material

polymer concrete channels with
ductile iron edge and gratings

Areas of application

- Bus stations
- Pedestrian areas
- Containertrans-
hipping facilities
and roads
- Industrial
surfaces
- Car parks
- Logistics
facilities
- WHG-Water
conservation
and protection
surfaces
- Service stations
- Airport surfaces

ACO Qmax Hydraulic Capacity Slot Channel



Load classes

- A 15
 - B 125
 - C 250
 - D 400
 - E 600
 - F 900
- in accordance with EN 1433

Nominal heights

225, 350, 550, 700, 900

Material

Plastic system elements made of MDPE,
a recycled plastic

Areas of application

- Large sealed surfaces
- Pedestrian areas
- Interim storage/rain water runoff
buffering
- Logistics surfaces
- Port and industrial surfaces
- Airport surfaces

Monolithic Line Drainage

ACO Monoblock RD Drainage Channel



Load classes

■ D 400 ■ E 600 ■ F 900
in accordance with DIN EN 1433

Nominal widths

100, 150, 200, 300

Material

Monolithic polymer concrete,
natural or anthracite

Areas of application

- Motorways
- Airports
- Container transshipment facilities
- Industrial surfaces
- Truck parks
- Logistics facilities and roads
- Roadside drainage
- Service stations

ACO Monoblock PD Drainage Channel



Load classes

■ A 15 ■ C 250
■ B 125 ■ D 400
in accordance with EN 1433

Nominal widths

100, 150, 200

Material

Monolithic polymer concrete,
natural or anthracite

Areas of application

- Pedestrian areas
- Streets
- Car parks
- Residential areas
- Public areas

ACO KerbDrain Kerb Drainage Channel



Load classes

- A 15
 - B 125
 - C 250
 - D 400
- in accordance with DIN EN 1433

Structural heights

305 and 480 mm

Material

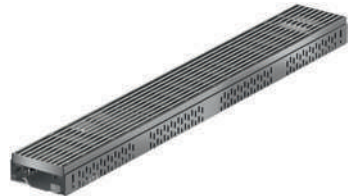
Monolithic polymer concrete, grey

Areas of application

- Bridges
- Logistics facilities and roads
- Roadside drainage

Facade Drainage

ACO Profiline Facade Drainage Channel



Height adjustable

Widths

100, 130, 200, 250
variable and fixed height

Material

Stainless steel and galvanized steel

Areas of application

- Facades
- Terraces

ACO Service

Service offering for our Clients

Every project is different, has its own requirements and challenges. In addition to our products we also offer you our know-how and our service to co-develop bespoke solutions – from pre-planning to post project stages.

www.aco.com



train:
Information
and training

design:
Planning
and optimising

support:
Construction
consultation
and support

care:
Inspection
and maintenance

Grating Configurator

The grating configurator aids choosing the best solution on the basis of visual criteria and different scenarios. The technical data on the selected gratings can be downloaded or saved in a project folder.

www.draindesign.de

